

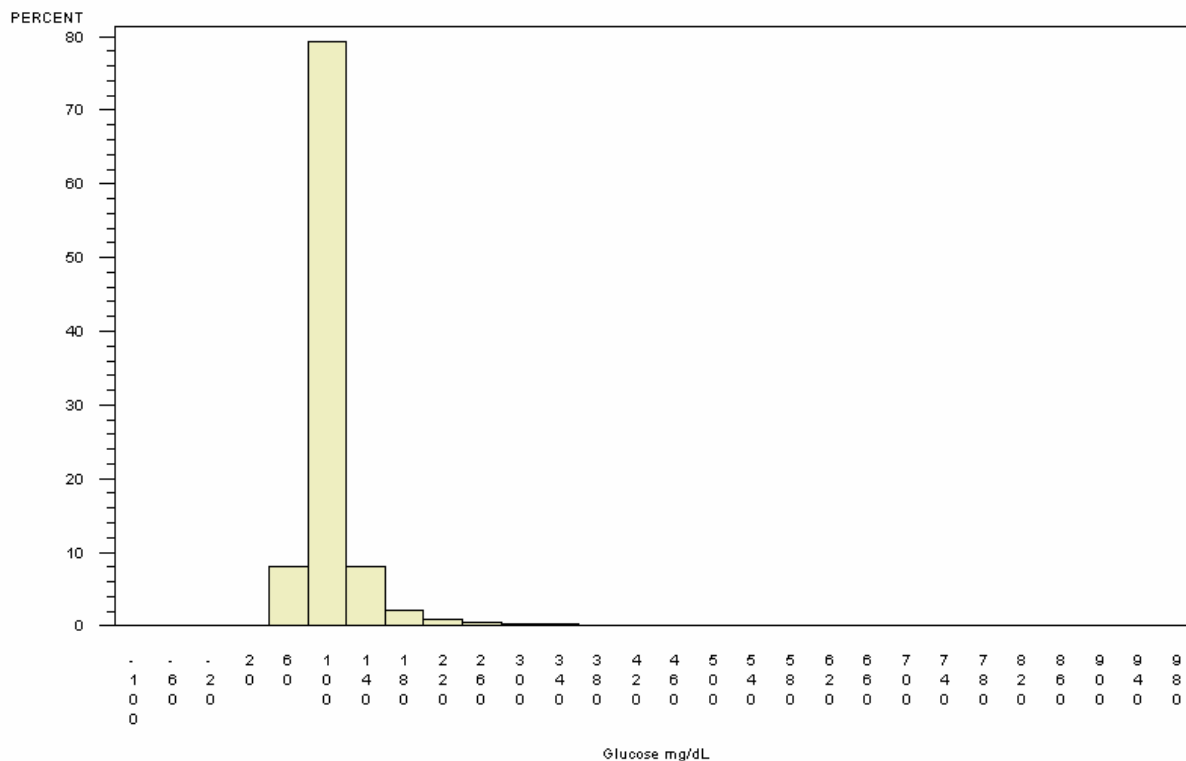
Summary Results for Serum Glucose for Participants Fasting for < 4 Hours

SERUM GLUCOSE AFTER <4 HOURS OF FASTING

FOR ALL AGE GROUPS

PARTICIPANTS=28367, MEAN=102.32, STANDARD DEVIATION=34.93

1st PERCENTILE=66.00, MEDIAN=94.00, 99th PERCENTILE=268.00



Reader's Guide to Understanding This Information:

These graphs represent results for participants reporting less than a 4 hour fast prior to providing a blood sample. Due to the non-fasting status of these participants, these results are difficult to interpret with regard to diabetic status.