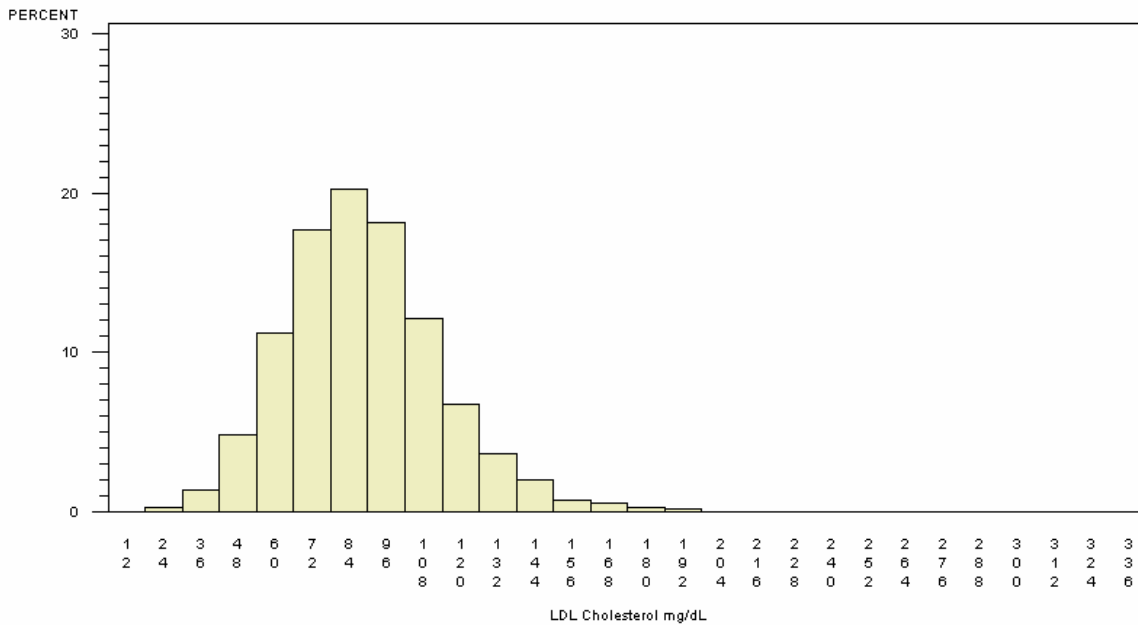


# Summary Results for Low Density Lipoprotein (LDL) Cholesterol for Participants 2-19 Years of Age

## LEVELS OF LDL CHOLESTEROL IN CHILDREN AGED 2-19 YEARS

PARTICIPANTS=11921, MEAN=88.15, STANDARD DEVIATION=25.67

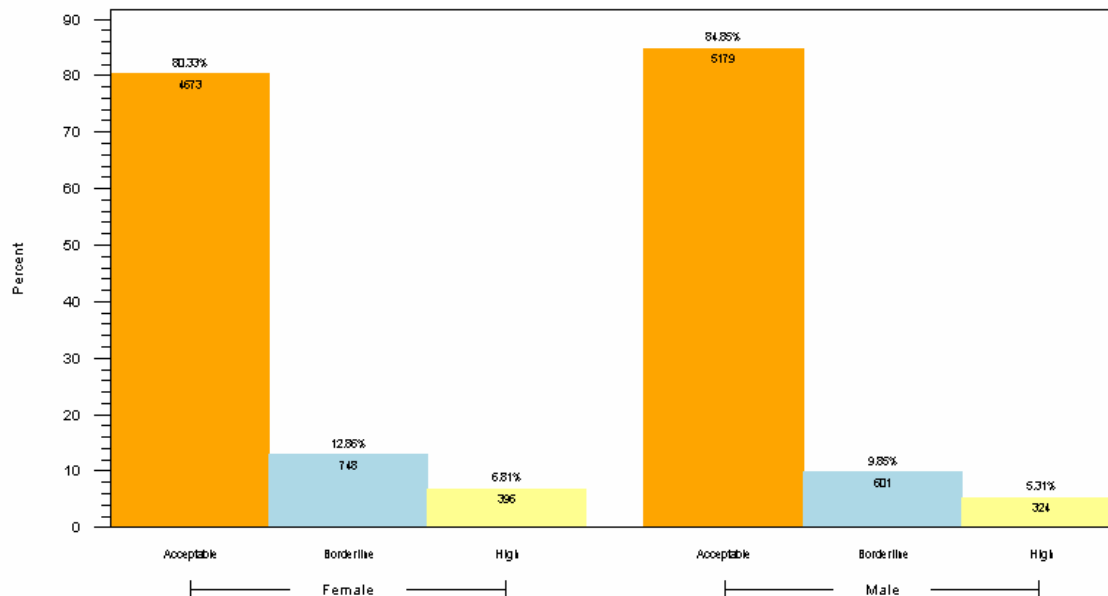
1<sup>st</sup> PERCENTILE=37.00, MEDIAN=86.00, 99<sup>th</sup> PERCENTILE=164.00



NORMAL <110 mg/dL, TAKEN FROM <http://www.americanheart.org/presenter.jhtml?identifier=4499>

## LEVELS OF LDL CHOLESTEROL IN CHILDREN AGED 2-19 YEARS

BY LDL CATEGORY WITHIN GENDER FOR CHILDREN AGED 2-19 YEARS (PARTICIPANTS=11921)



1. ACCEPTABLE <110, BORDERLINE 110-129, HIGH 130+ (UNIT: mg/dL)
2. RANGES TAKEN FROM <http://www.americanheart.org/presenter.jhtml?identifier=4499>
3. RESULTS BASED ON LAB VALUES, NOT DIAGNOSIS

### Reader's Guide to Understanding This Information:

Of participants 2-19 years of age, 15-20% had LDL cholesterol levels considered to be high or borderline high. The prevalence of elevated LDL cholesterol levels was higher in girls compared to boys.